

METAL.liners

Metal3order[®]
MADE IN ITALY

METAL.liners

Metal3order[®]
MADE IN ITALY

The Style is Changing

L'attenzione di **METALBORDER** per i dettagli è ben nota: i dettagli stessi sono ciò che rende gli ambienti autenticamente pieni di bellezza e armonia.

METAL.liners è la nuova collezione firmata Metalborder che mette in relazione design e funzionalità, colorazioni e forme innovative, che si ispirano al mondo del lusso e della moda, per rifinire con cura e stile qualsiasi ambiente. L'ampia gamma di colori e finiture è in grado di rispondere alle diverse esigenze di gusto, grazie anche all'alta qualità dei materiali e alle meticolose lavorazioni realizzate esclusivamente in Italia, sempre nel rispetto dell'ambiente.

METALBORDER'S attention for the detail is well-renowned: details themselves are what makes indoor spaces authentically full of beauty and harmony.

METAL.liners, the new collection signed by Metalborder, bridge design and functionality, colors and innovative shapes: luxury and fashion worlds inspires the series to fill with care and style each room. The wide range of colors and finishes satisfies each and every taste, thanks to top-quality materials and the know-how of craftsmanship: each piece is meticulously produced in Italian manufactures, in compliance with environmental regulations.



Metal3order[®]
MADE IN ITALY
The Style is Changing



Metal3order[®]
MADE IN ITALY

INDICE CONTENT	PAG.
CLIC XL.liners&Jolly per lastre 6 mm	6 9
METALBRIGHT.liners 1,5	10
METALBRIGHT.liners&Jolly 1x1	11
MINI METALBRIGHT.liners 0,5	12
MINI OMEGA.liners 0,5	13
VINTAGE.liners	14
EPOQUE.liners	15
GLAMOUR.Jolly	16
GLAMOUR.liners	17
GLAMOUR.nature	18
GLAMOUR SOFT.liners & Jolly	19
STREET.collection	20
OTTONE.liners	21
HI-TECH.liners & tavelle	22 23
HI-TECH.collection	24 25
HI-TECH.colors	26
TAVELLE 3 mm	27
QUARTER ROUND	28 29
GLAMOUR.stick	30
BATTISCOPA	31



Una superficie rifinita ed elegante è l'elemento da cui partire per la progettazione di ambienti.

Metalborder ha creato una collezione di profili innovativi, dal design in linea con le più evolute esigenze del mondo dell'architettura, pensati per facilitare e ottimizzare la posa delle lastre di grande formato.

Il sistema **CLIC XL** è il frutto di un'intensa attività di ricerca e sviluppo maturata in anni di esperienza e studio. È pensato nei minimi dettagli e coperto da brevetto. Ogni elemento che compone il progetto è di fondamentale importanza per renderlo performante, per garantire una posa a regola d'arte, nel rispetto dei canoni del design contemporaneo.

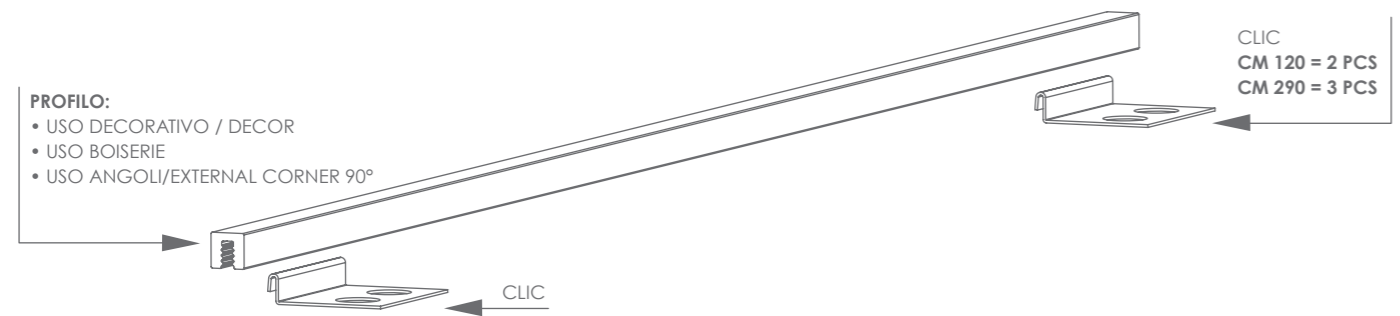
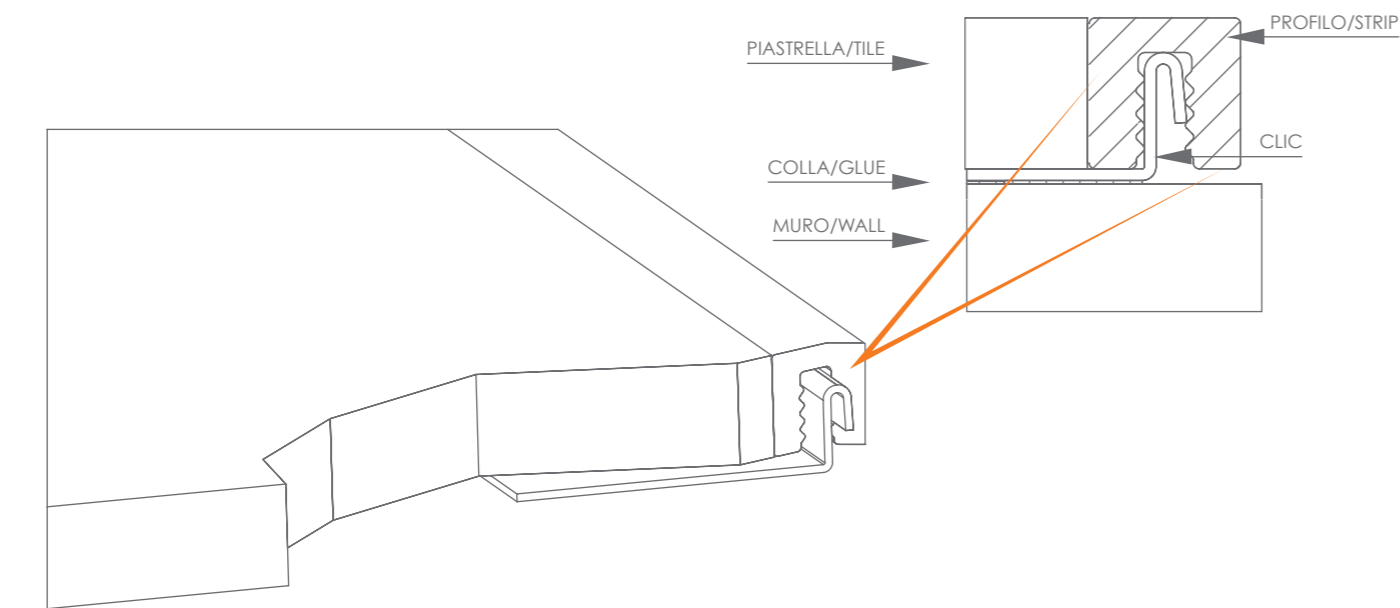
A refined and elegant surface is the starting point to design any space in your home.

Metalborder has created a collection of innovative profiles, that recall the most recent trends in architecture, for a optimized, easy installation of large format tiles.

CLIC XL system is born out of an intense R&D activity over years of experience and study: its detailed design is now protected by patent. Each element of the project is essential to guarantee workmanlike installation, abiding by the tenets of contemporary design.

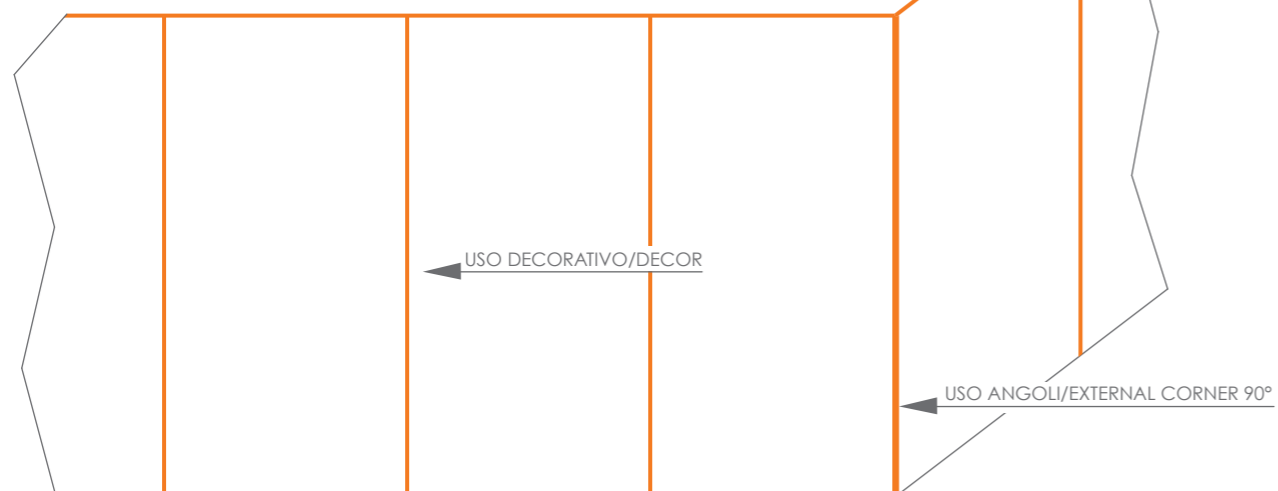
CLIC XL.liners&Jolly per lastre 6 mm

BREVETTATO | PATENTED



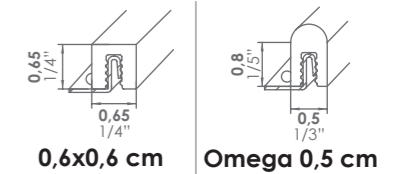
CLIC XL - FINITURA SU 2 LATI/2 SIDES FINISH

1 SOLO PROFILO PER 3 SOLUZIONI DI UTILIZZO



CLIC XL.liners&Jolly per lastre 6 mm

BREVETTATO | PATENTED



CLIC XL - FINITURA SU 2 LATI / 2 SIDES FINISH

	0,6x0,6 cm		Omega 0,5 cm	
	120 cm 47"	290 cm 114"	120 cm 47"	290 cm 114"
S.02 ARGENTO SATINATO	20	56	20	56
S.03 BRONZO SATINATO	28	74	28	74
L.02 ARGENTO LUCIDO	28	76	28	76
L.03 BRONZO LUCIDO	34	90	34	90
PCS/Box	16	8	10	10
B.01 BRUSH NEUTRO	20	58		
B.02 BRUSH ARGENTO	28	78		
B.03 BRUSH BRONZO	34	90		
B.05 BRUSH ORO	34	90		
B.04 BRUSH E21	38	100		
B.11 BRUSH BLACK	38	100		
PCS/Box	16	8		

CARATTERISTICHE TECNICHE - TECHNICAL SPECIFICATIONS

Alluminio EN AW6060 con finitura brushed manuale e anodizzato. Finitura B.01 protetta con trasparente.
Aluminium EN AW6060 - brushed finish handmade and anodized. Finish B.01 protected with transparent.



USO: rivestimento e pavimento da interno
USE: wall and floor

CLIC XL GLAMOUR

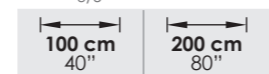
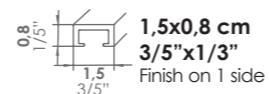
	120 cm 47"	290 cm 114"
01 SILVER		
08 AZZURRO		
10 SAND CHIARO	36	98
26 BURNISHED		
21 BRONZO		
23 COAL		
PCS/Box	8	8

CARATTERISTICHE TECNICHE - TECHNICAL SPECIFICATIONS

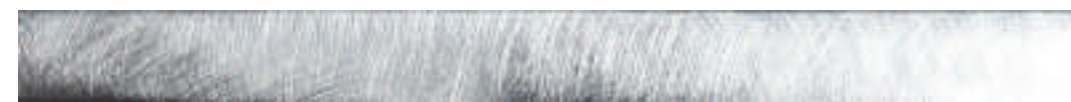
Alluminio EN AW6060 protetto con resina decorata applicata a mano.
Aluminium EN AW6060 with resin protection applied by hand.



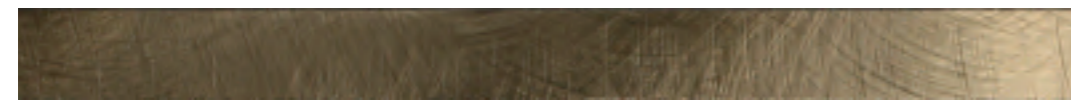
USO: rivestimento.
USE: wall.



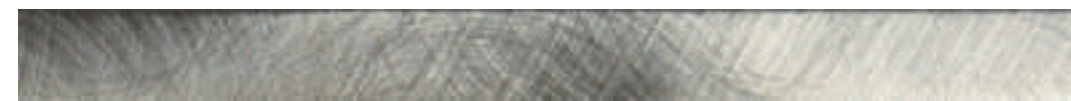
B.01 BRUSH NEUTRO



B.02 BRUSH ARGENTO



B.03 BRUSH BRONZO



B.07 BRUSH TITANIUM



B.05 BRUSH ORO



B.04 BRUSH E21



B.09 BRUSH COPPER



B.08 BRUSH MOKA



B.06 BRUSH FUMÈ

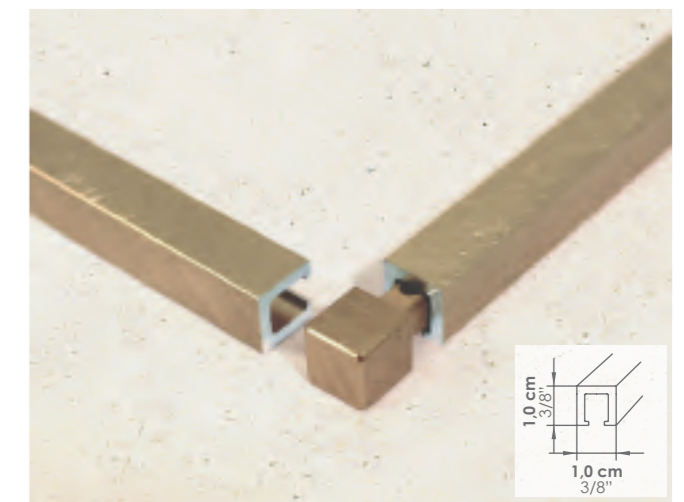
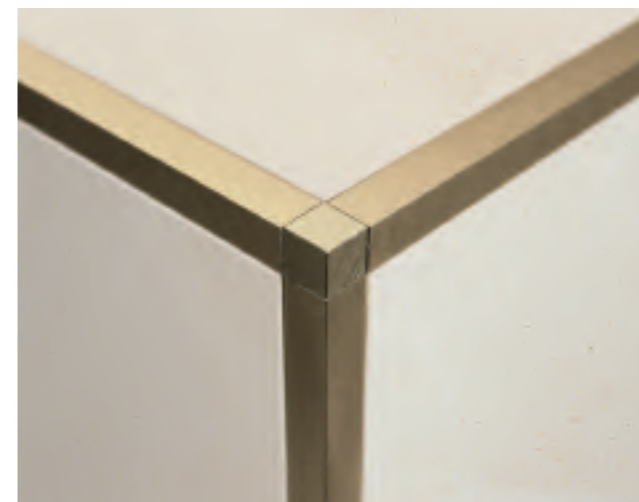


B.10 BRUSH SMOKE



B.11 BRUSH BLACK

	100 cm 40"	200 cm 80"
B.01 BRUSH NEUTRO	14	34
B.02 BRUSH ARGENTO	20	46
B.03 BRUSH BRONZO	24	54
B.07 BRUSH TITANIUM	26	58
B.05 BRUSH ORO	24	54
B.04 BRUSH E21	26	58
B.09 BRUSH COPPER	32	70
B.08 BRUSH MOKA	26	58
B.06 BRUSH FUMÈ	26	58
B.10 BRUSH SMOKE	26	58
B.11 BRUSH BLACK	26	58
PCS/Box	6	6



FINITURA SU 2 LATI / 2 SIDES BRUSHED



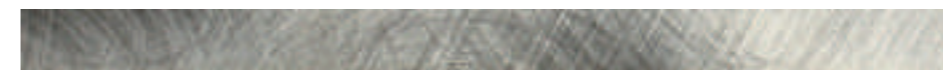
B.01 BRUSH NEUTRO



B.02 BRUSH ARGENTO



B.03 BRUSH BRONZO



B.07 BRUSH TITANIUM



B.05 BRUSH ORO



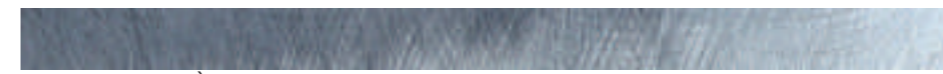
B.04 BRUSH E21



B.09 BRUSH COPPER



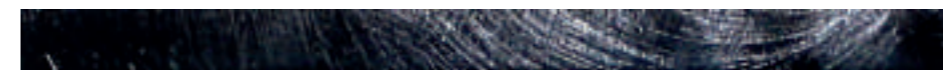
B.08 BRUSH MOKA



B.06 BRUSH FUMÈ



B.10 BRUSH SMOKE



B.11 BRUSH BLACK

	100 cm 40"	200 cm 80"	TAPPI/CAPS 1,0x1,0 cm 3/8"x3/8"
B.01 BRUSH NEUTRO	14	34	12
B.02 BRUSH ARGENTO	20	46	16
B.03 BRUSH BRONZO	24	54	16
B.07 BRUSH TITANIUM	26	58	16
B.05 BRUSH ORO	24	54	16
B.04 BRUSH E21	26	58	16
B.09 BRUSH COPPER	32	70	22
B.08 BRUSH MOKA	26	58	16
B.06 BRUSH FUMÈ	26	58	16
B.10 BRUSH SMOKE	26	58	16
B.11 BRUSH BLACK	26	58	16
PCS/Box	8	8	2

CARATTERISTICHE TECNICHE – TECHNICAL SPECIFICATIONS
 Alluminio EN AW6060 con finitura brushed manuale e anodizzato. Finitura B.01 protetta con trasparente.
 Aluminium EN AW6060 – brushed finish handmade and anodized. Finish B.01 protected with transparent.



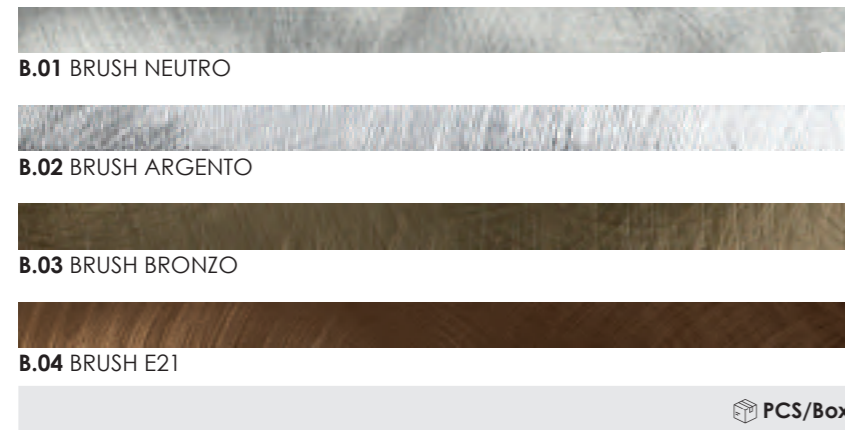
USO: rivestimento e pavimento da interno.
 USE: wall and floor.

CARATTERISTICHE TECNICHE – TECHNICAL SPECIFICATIONS
 Alluminio EN AW6060 con finitura brushed manuale e anodizzato. Finitura B.01 protetta con trasparente.
 Aluminium EN AW6060 – brushed finish handmade and anodized. Finish B.01 protected with transparent.



USO: rivestimento e pavimento da interno.
 USE: wall and floor.

MINI METALBRIGHT.liners 0.5



	100 cm 40"	120 cm 47"	200 cm 80"	DIMENSIONI DIMENSION
B.01 BRUSH NEUTRO	10	14	26	
B.02 BRUSH ARGENTO	20	26	46	
B.03 BRUSH BRONZO	24	30	54	
B.04 BRUSH E21	24	30	54	
PCS/Box	10	10	10	



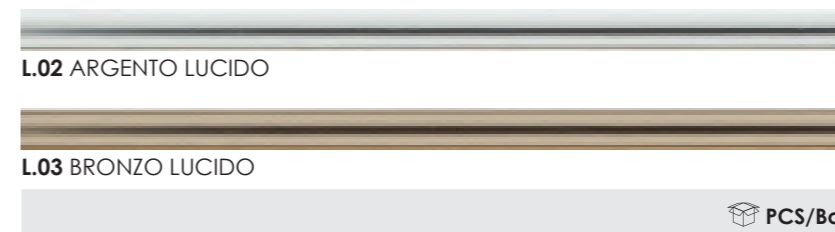
	120 cm 47"	DIMENSIONI DIMENSION
B.13 BRUSH ORANGE		
B.14 BRUSH RED		
B.15 BRUSH BLU		
PCS/Box		



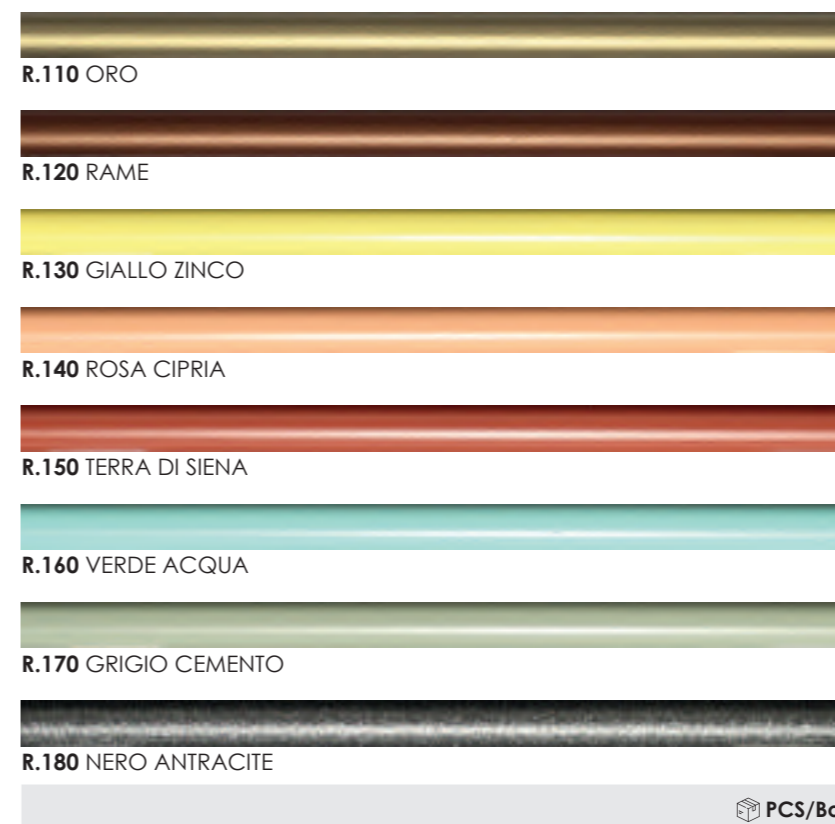
CARATTERISTICHE TECNICHE – TECHNICAL SPECIFICATIONS
 Alluminio EN AW6060 con graffiatura manuale e anodizzato. Finitura B.01 con graffiatura manuale e protetta con trasparente.
 Aluminium EN AW6060 – brushed finish handmade and anodized. Finish B.01 with brushed finish handmade and protected with transparent.

USO: rivestimento e pavimento da interno.
 USE: wall and floor.

MINI OMEGA.liners 0.5



CARATTERISTICHE TECNICHE – TECHNICAL SPECIFICATIONS
 Alluminio EN AW6060 con finitura anodizzata.
 Aluminium EN AW6060 with anodized finish.



CARATTERISTICHE TECNICHE – TECHNICAL SPECIFICATIONS
 Alluminio EN AW6060 con smalti applicati a mano.
 Aluminium EN AW6060 with hand applied paint.



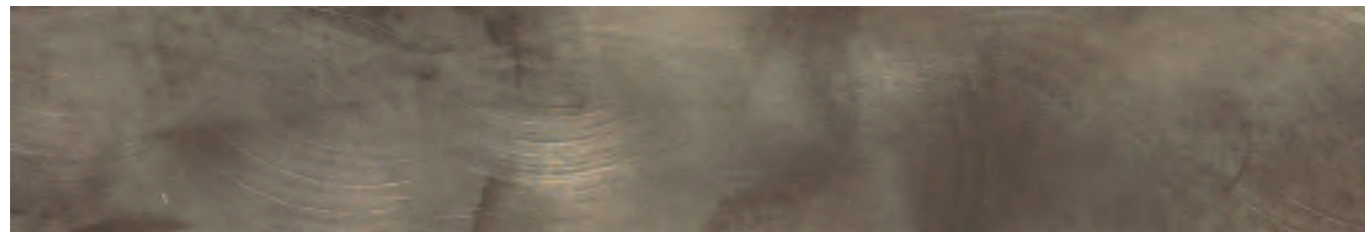
Produced by MetalBorder · Handmade in Modena · Material Aluminium

	100 cm 40"	120 cm 47"	200 cm 80"	DIMENSIONI DIMENSION
L.02 ARGENTO LUCIDO	22	27	50	
L.03 BRONZO LUCIDO	26	32	58	
PCS/Box	10	10	10	

USO: rivestimento.
 USE: wall.

	120 cm 47"	DIMENSIONI DIMENSION
R.110 ORO		
R.120 RAME		
R.130 GIALLO ZINCO		
R.140 ROSA CIPRIA		
R.150 TERRA DI SIENA		
R.160 VERDE ACQUA		
R.170 GRIGIO CEMENTO		
R.180 NERO ANTRACITE		
PCS/Box	10	

USO: rivestimento
 USE: wall



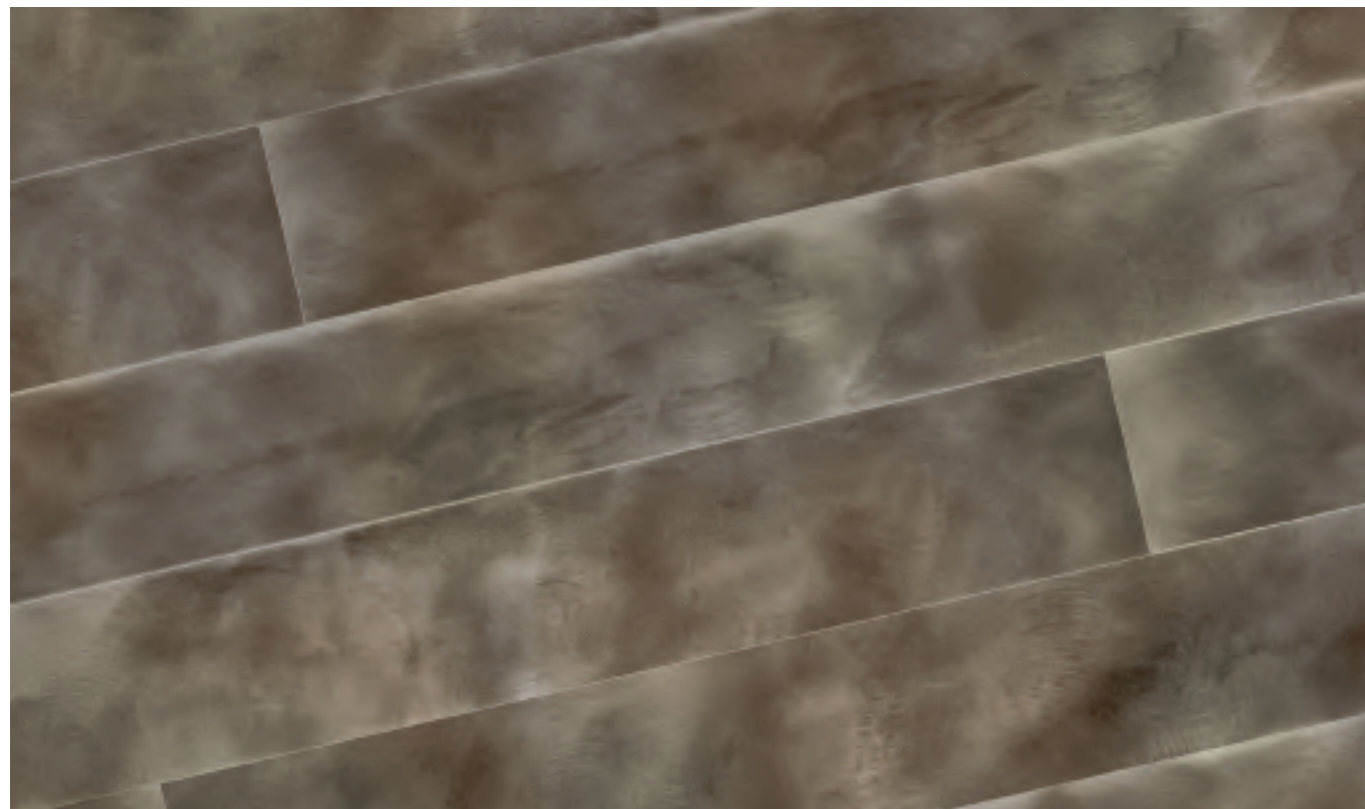
VINTAGE BRUSHED



VINTAGE SANDED

		100 cm 40"		200 cm 80"		PCS/Box	
				100 cm/40"	200 cm/80"		
	1,5x0,8 cm 3/5"x1/3"	22	50	12	6		
	3x0,8 cm 1,5"x1/3"	40	86	12	6		
	5x0,8 cm 2"x1/3"	55	115	10	6		
	10x0,8 cm 4"x1/3"	99	159	5	5		

Su richiesta si eseguono anche in spessore di 3 mm - All sizes available in thickness 3 mm



CARATTERISTICHE TECNICHE - TECHNICAL SPECIFICATIONS

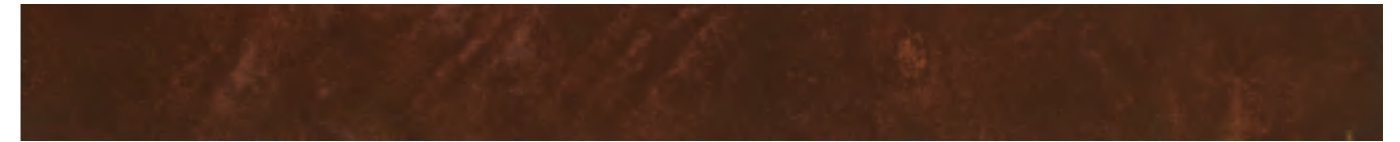
Alluminio EN AW6060 finitura anticata eseguita manualmente. La stonalizzazione è una caratteristica del prodotto.
Aluminium EN AW6060 antique finish handmade. The non-uniformity of the color is a characteristic of the product.



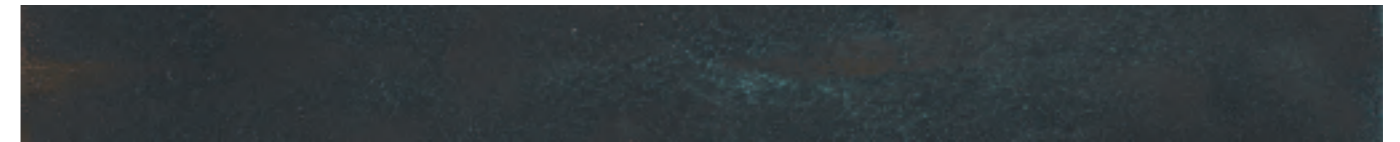
USO: rivestimento e pavimento da interno.
USE: wall and floor.



MBE COPPER EPOQUE



MBE IRON EPOQUE



MBE BRONZE EPOQUE

		100 cm 40"		200 cm 80"		PCS/Box	
				100 cm/40"	200 cm/80"		
	1,5x0,8 cm 3/5"x1/3"	30	66	12	6		
	3x0,8 cm 1,5"x1/3"	50	106	12	6		
	5x0,8 cm 2"x1/3"	84	144	10	6		
	10x0,8 cm 4"x1/3"	138	187	5	5		

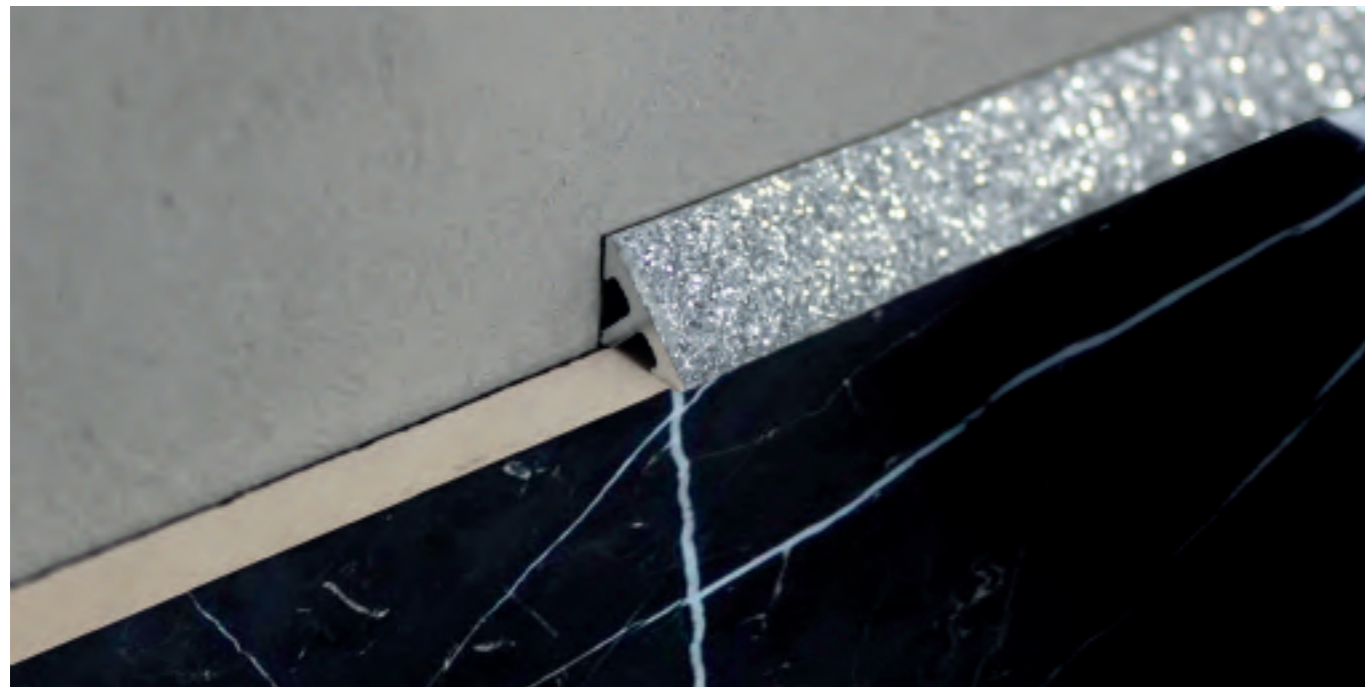


CARATTERISTICHE TECNICHE - TECHNICAL SPECIFICATIONS

Alluminio EN AW6060 con smalti applicati a mano. La stonalizzazione è una caratteristica del prodotto.
Aluminium EN AW6060 with varnish applied by hand. The non-uniformity of the color is a characteristic of the product.



USO: rivestimento. No interno doccia.
USE: wall. No internal shower.



PROFILI ANGOLARI GLITTER . GLITTER CORNER PROFILES

DIMENSIONI/DIMENSION	CODICE/CODE	←→	PCS/Box
	ANG.GL.60	60 cm / 24"	24
	ANG.GL.100	100 cm / 40"	36
	ANG.200.GL	200 cm / 80"	78

Disponibili in tutte le colorazioni della linea GLAMOUR liners - Available in all colors

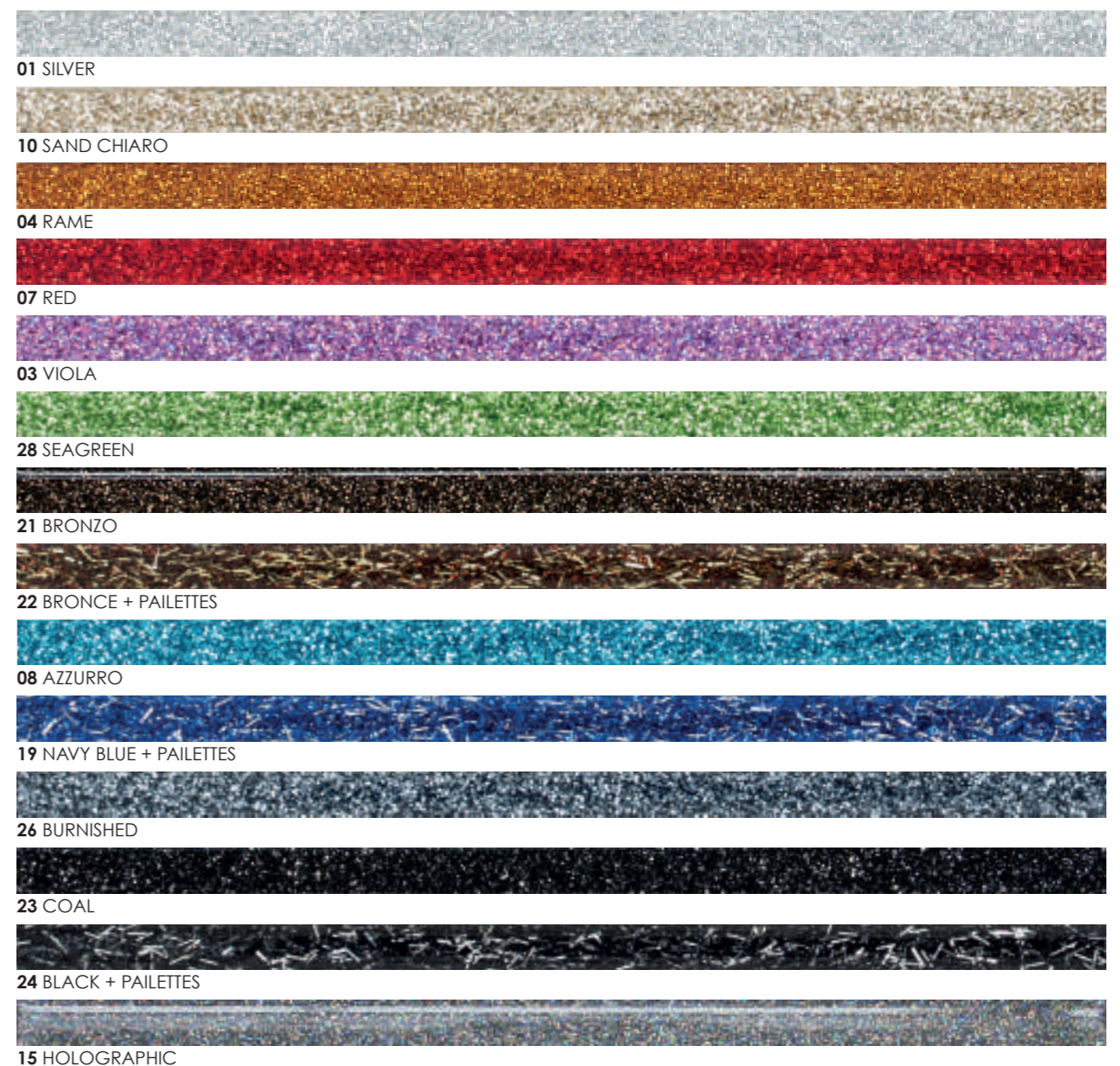
*NOTA: a richiesta lunghezze per lastre - Other lengths on request

RACC. SPIGOLO	DIMENSIONI/DIMENSION	←→	PCS/Box
	1 cm / 0,4"		22



CARATTERISTICHE TECNICHE - TECHNICAL SPECIFICATIONS
 Alluminio EN AW6060 protetto con resina decorata applicata a mano.
 Aluminium EN AW6060 protected with decorated resin applied by hand.

USO: rivestimento.
 USE: wall.




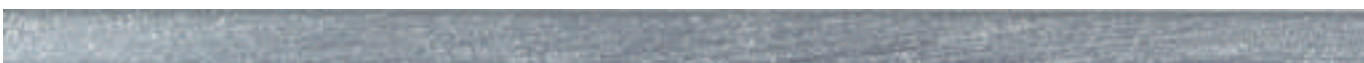



DIMENSIONI/DIMENSION	CODICE/CODE	←→	PCS/Box
 0,5x0,8 cm 1/5"x1/3"	01.0605	60 cm / 24"	18
	01.1005	100 cm / 40"	28
	01.2005	200 cm / 80"	62
 1,0x0,8 cm 3/8"x1/3"	01.0610	60 cm / 24"	18
	01.1010	100 cm / 40"	28
	01.2010	200 cm / 80"	62
 1,5x0,8 cm 3/5"x1/3"	01.0615	60 cm / 24"	24
	01.1015	100 cm / 40"	36
	01.2015	200 cm / 80"	78

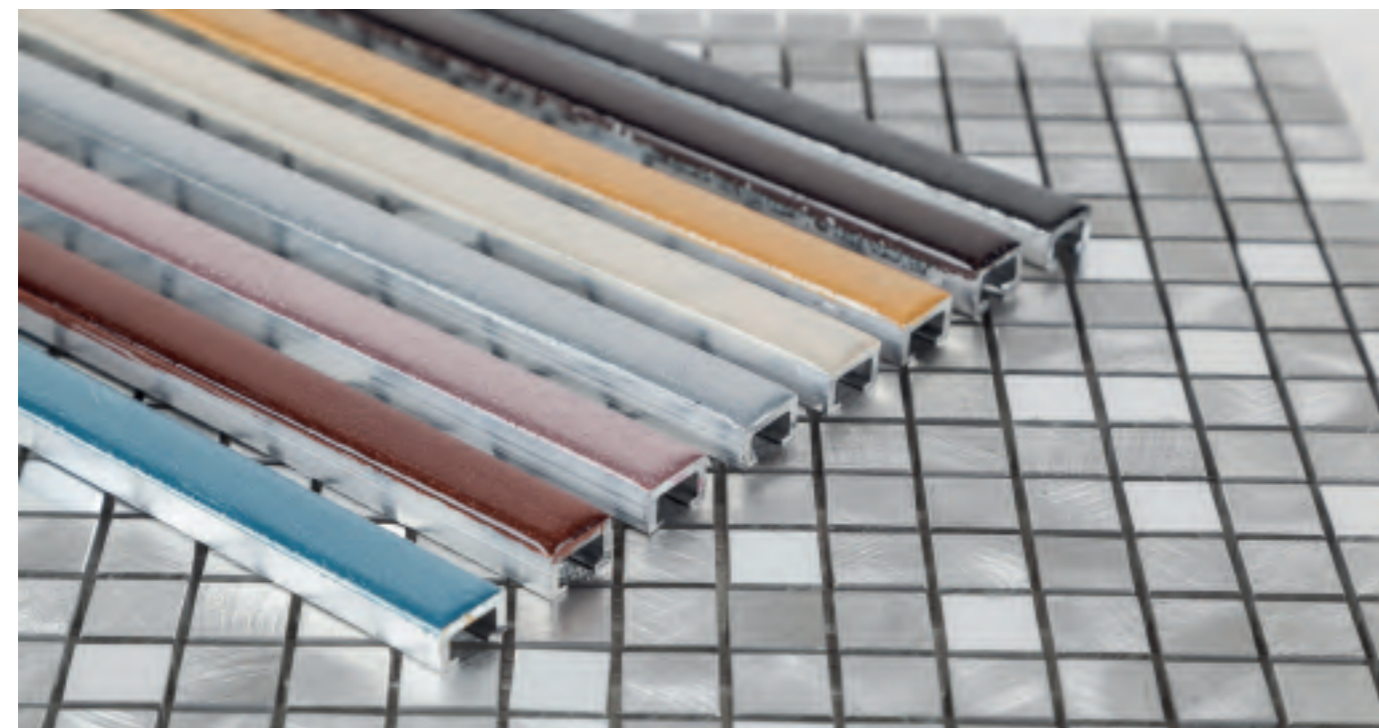
*NOTA: a richiesta lunghezze per lastre - Other lengths on request

CARATTERISTICHE TECNICHE - TECHNICAL SPECIFICATIONS
 Alluminio EN AW6060 protetto con resina decorata applicata a mano.
 Aluminium EN AW6060 protected with decorated resin applied by hand.


USO: rivestimento.
 USE: wall.

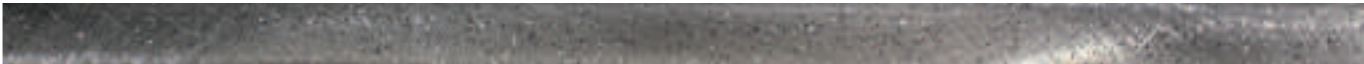





	750 BEIGE CHIARO	1,5x100 cm / 3/5x40"
	190 - ORO	1,5x100 cm / 3/5x40"
	729 - ROSA	1,5x100 cm / 3/5x40"
	710 - RAMATO	1,5x100 cm / 3/5x40"
	715 - MARRONE	1,5x100 cm / 3/5x40"
	732 - AZZURRO	1,5x100 cm / 3/5x40"
	170 - ARGENTO	1,5x100 cm / 3/5x40"
	716 - ANTRACITE	1,5x100 cm / 3/5x40"



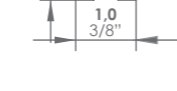
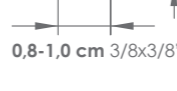
DIMENSIONI/DIMENSION		PCS/Box
 1,5x0,8 cm 3/5"x1/3"	100 cm / 40"	54

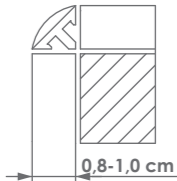
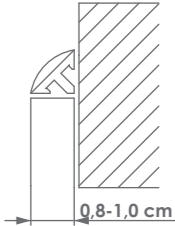



CARATTERISTICHE TECNICHE - TECHNICAL SPECIFICATIONS
 Alluminio EN AW6060 con graffiatura manuale e protetto con resina decorata applicata a mano.
 Aluminium EN AW6060 brushed finish handmade and protected with decorated resin applied by hand.

 USO: rivestimento.
 USE: wall.

	ST.01 SOFT SILVER
	ST.03 SOFT BRONZO
	ST.04 SOFT TABACCO
	ST.05 SOFT ORO
	ST.08 SOFT TURCHESE
	ST.10 SOFT ANTRACITE

DIMENSIONI DIMENSION	PCS/Box	DIMENSIONI DIMENSION	PCS/Box		
 100 cm 40"	32	8	 100 cm 40"	40	8
 200 cm 80"	70	8	 200 cm 80"	86	8


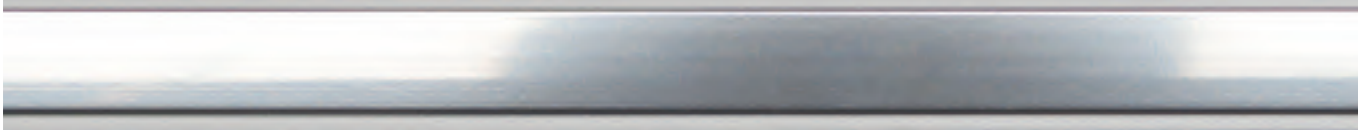
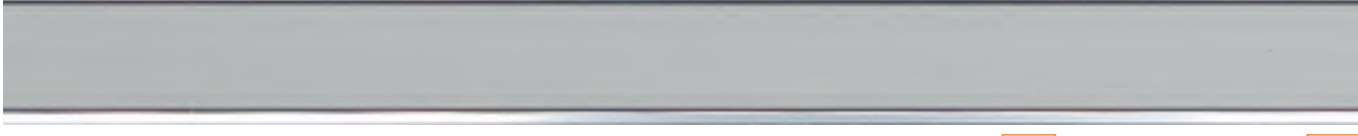


 POSA ANGOLO 90°
 POSA BOISERIE

RACC. SPIGOLO	DIMENSIONI/DIMENSION	PCS/Box
	1 cm / 0,4"	22




CARATTERISTICHE TECNICHE - TECHNICAL SPECIFICATIONS
 Alluminio EN AW6060 con graffiatura manuale e protetto con resina decorata applicata a mano.
 Aluminium EN AW6060 brushed finish handmade and protected with decorated resin applied by hand.

 USO: rivestimento.
 USE: wall.

	2x60 cm - 4/5"x24" 23	2x100 cm - 4/5"x40" 38
	2x60 cm - 4/5"x24" 24	2x100 cm - 4/5"x40" 39
	2x60 cm - 4/5"x24" 24	2x100 cm - 4/5"x40" 39
	2x60 cm - 4/5"x24" 27	2x100 cm - 4/5"x40" 44
	2x60 cm - 4/5"x24" 46	2x100 cm - 4/5"x40" 72
	2x60 cm - 4/5"x24" 46	2x100 cm - 4/5"x40" 72

DIMENSIONI/DIMENSION	PCS/Box
60 cm / 24"	6
100 cm / 40"	6

CARATTERISTICHE TECNICHE - TECHNICAL SPECIFICATIONS
 Alluminio EN AW6060 con finitura anodizzata.
 Aluminium EN AW6060 with anodized finish.

 USO: rivestimento e pavimento da interno.
 USE: wall and floor.



LUCIDO



SATINATO



BRUSHED



ANTICATO



DIMENSIONI/DIMENSION	LUCIDO	SATINATO	BRUSHED	ANTICATO	PCS/Box
 120 cm 48"					6
 0,5 cm 1/5" 1,0 cm 3/8"	54	46	46	58	6
 1,0 cm 3/8"	58	50	50	62	6

CARATTERISTICHE TECNICHE - TECHNICAL SPECIFICATIONS
 Ottone: Eventuali presenze e/o formazione di ossidazioni sono naturali in questo materiale.
 Brass: presence and/or formation of an oxidisation is normal in this type of material.

 USO: rivestimento e pavimento da interno.
 USE: wall and floor.



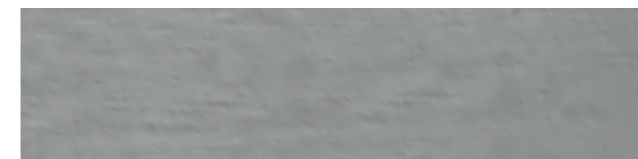
SANDED

MBM0530LEV 5x30 cm / 2"x12"	12
MBM0560LEV 5x60 cm / 2"x24"	24
MBM05100LEV 5x100 cm / 2"x40"	39
MBM05200LEV 5x200 cm / 2"x80"	82



BRUSHED

MBM0530G 5x30 cm / 2"x12"	10
MBM0560G 5x60 cm / 2"x24"	20
MBM5100G 5x100 cm / 2"x40"	36
MBM5100G 5x200 cm / 2"x80"	78



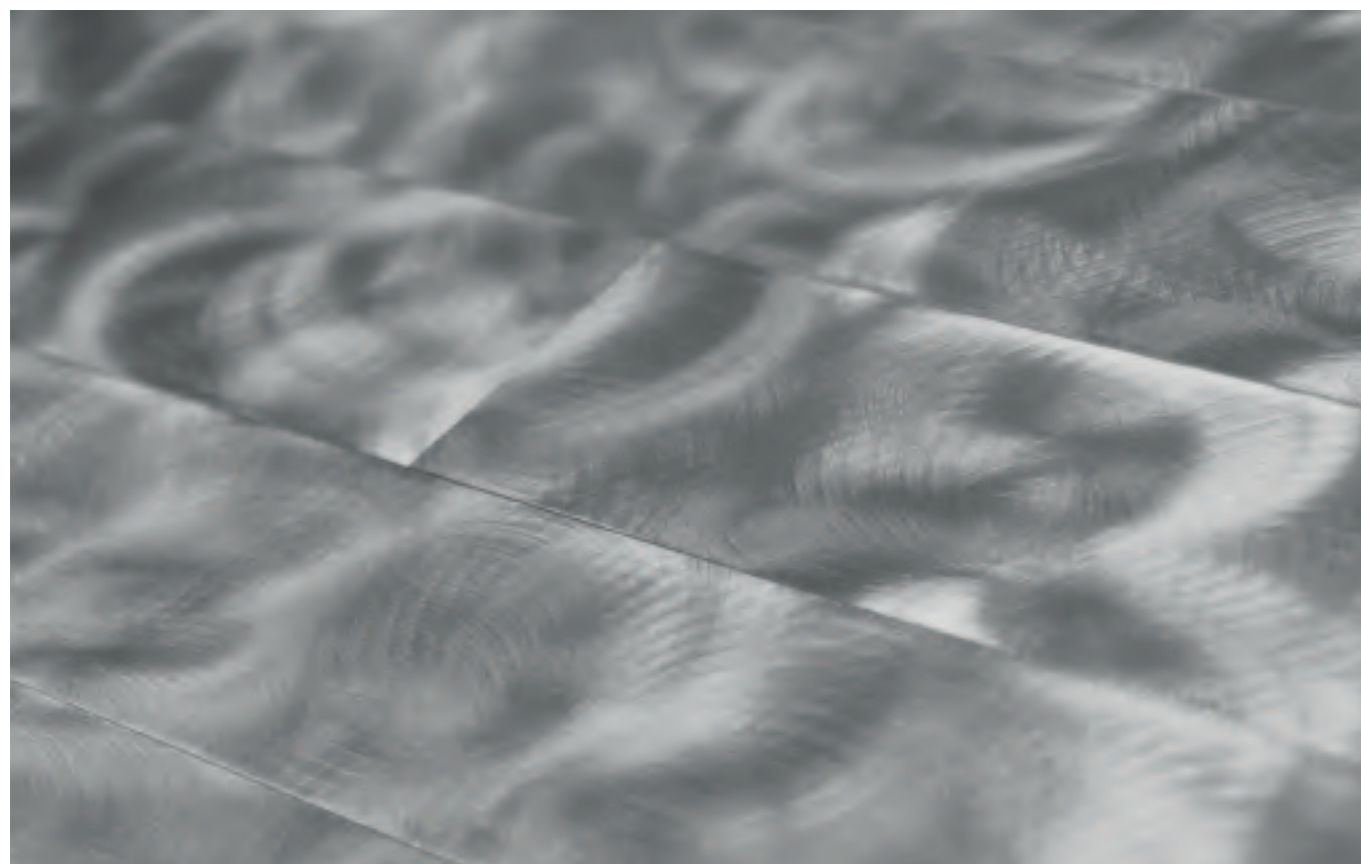
SANDED

MBM1010LEV 10x10 cm / 4"x4"	10
MBM1030LEV 10x30 cm / 4"x12"	30
MBM1060LEV 10x60 cm / 2"x24"	46
MBM10100LEV 10x100 cm / 4"x40"	84
MBM10200LEV 10x200 cm / 4"x80"	143



BRUSHED

MBM1010G 10x10 cm / 4"x4"	8
MBM1030G 10x30 cm / 4"x12"	28
MBM1060G 10x60 cm / 2"x24"	45
MBM10100G 10x100 cm / 4"x40"	82
MBM10200G 10x200 cm / 4"x80"	141



IMBALLI . PACKAGING

DIMENSIONI/DIMENSION ← →	PCS/Box
5x30 cm / 2"x12"	15
5x60 cm / 2"x24"	15
5x100 cm / 2"x40"	15
5x200 cm / 2"x80"	15
10x10 cm / 4"x4"	30
10x30 cm / 4"x12"	10
10x60 cm / 4"x24"	5
10x100 cm / 4"x40"	5
10x200 cm / 4"x80"	5

Tutti i formati sono disponibili in spessore 3 e 8 mm - All sizes available in thickness 3 and 8 mm

CARATTERISTICHE TECNICHE - TECHNICAL SPECIFICATIONS
 Alluminio EN AW6060 con graffiatura manuale e protetto con trasparente.
 Aluminium EN AW6060 - brushed finish handmade and protected with transparent.



USO: rivestimento e pavimento da interno.
 USE: wall and floor.

CARATTERISTICHE TECNICHE - TECHNICAL SPECIFICATIONS
 Alluminio EN AW6060 con graffiatura manuale e protetto con trasparente.
 Aluminium EN AW6060 - brushed finish handmade and protected with transparent.



USO: rivestimento e pavimento da interno.
 USE: wall and floor.



B.01 BRUSH NEUTRO



L.01 LEVIGATO/SANDED

DIMENSIONI/DIMENSION	B.01 BRUSH			L.01 LEVIGATO			S.02 ARGENTO SATINATO			L.02 ARGENTO LUCIDO		
	60 cm 24"	100 cm 40"	200 cm 80"	60 cm 24"	100 cm 40"	200 cm 80"	60 cm 24"	100 cm 40"	200 cm 80"	60 cm 24"	100 cm 40"	200 cm 80"
 <p>0,3x1,0 cm 1/10"x3/8"</p> <p>PCS/Box</p>							6	10	26	10	17	39
18												
 <p>0,5x1,0 cm 1/5"x3/8"</p> <p>PCS/Box</p>	6	10	26				6	10	26	10	17	39
10												
 <p>0,8x0,8 cm 1/3"x1/3"</p> <p>PCS/Box</p>	9	14	34	10	15	36						
12												
 <p>1,0x0,8 cm 3/8"x1/3"</p> <p>PCS/Box</p>	9	14	34	10	15	36				14	22	48
8												
 <p>1,0x1,0 cm 3/8"x3/8"</p> <p>PCS/Box</p>	9	14	34	10	15	36	10	15	36	14	22	48
8												
 <p>1,0x1,0 cm PIENO 3/8"x3/8"</p> <p>PCS/Box</p>	10	23	50									
5												









S.02 ARGENTO SATINATO / SILVER SATIN






L.02 ARGENTO LUCIDO / SILVER GLOSSY

DIMENSIONI/DIMENSION	B.01 BRUSH			L.01 LEVIGATO			S.02 ARGENTO SATINATO			L.02 ARGENTO LUCIDO		
	60 cm 24"	100 cm 40"	200 cm 80"	60 cm 24"	100 cm 40"	200 cm 80"	60 cm 24"	100 cm 40"	200 cm 80"	60 cm 24"	100 cm 40"	200 cm 80"
 <p>1,5x0,8 cm 3/5"x1/3"</p> <p>PCS/Box</p>	9	14	34	10	15	36	10	15	36	14	22	48
12												
 <p>2,3x0,8 cm 9/10"x1/3"</p> <p>PCS/Box</p>	15	28	59	17	31	64						
15												
 <p>3,0x0,8 cm 1 1/5"x1/3"</p> <p>PCS/Box</p>	15	28	59	17	31	64						
15												
 <p>5,0x0,8 cm 2"x1/3"</p> <p>PCS/Box</p>	20	36	78	24	39	82						
15												
 <p>Omega 13 1,3x0,8 cm 1/2"x1/3"</p> <p>PCS/Box</p>							9	15	36	14	22	48
6												
 <p>Omega 06 1x0,65 cm 3/8"x1/4"</p> <p>PCS/Box</p>							9	15	36	14	22	48
8												



LUCIDI/GLOSSY

	0,5x1,0 / 1/5"x1/3"		1,0x1,0 / 3/8"x3/8"		1,5x0,8 / 3/5"x1/3"		1x0,65 / 3/8"x1/4"	
	100 cm 60"	200 cm 80"	100 cm 60"	200 cm 80"	100 cm 60"	200 cm 80"	100 cm 60"	200 cm 80"
 L.02 ARGENTO LUCIDO	17	39	22	48	22	48	22	48
 L.03 BRONZO LUCIDO	26	58	26	58	26	58	26	58
 L.05 ORO LUCIDO			26	58			26	58
 L.04 E21 LUCIDO	26	58	26	58			26	58
 L.08 MOKA LUCIDO	29	64	29	64				
 L.11 NERO LUCIDO			29	64				
 L.07 TITANIO LUCIDO	29	64	29	64				
 L.09 COPPER LUCIDO	32	70	32	70				

SATINATI / MAT


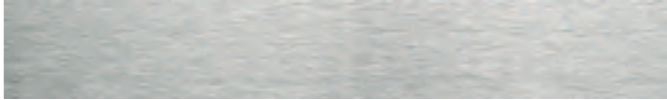


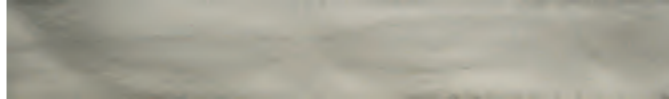


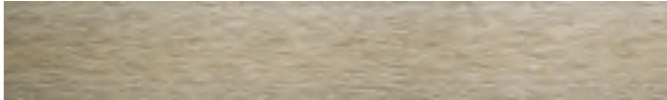


	0,5x1,0 / 1/5"x1/3"		1,0x1,0 / 3/8"x3/8"		1,5x0,8 / 3/5"x1/3"		1x0,65 / 3/8"x1/4"		
	100 cm 60"	200 cm 80"	100 cm 60"	200 cm 80"	100 cm 60"	200 cm 80"	100 cm 60"	200 cm 80"	
 S.02 ARGENTO SATINATO	10	26	15	36	15	36	15	36	
 S.03 BRONZO SATINATO	22	50	22	50	22	50	22	50	
 S.05 ORO SATINATO			22	50			22	50	
 S.04 E21 SATINATO			22	50					
 S.08 MOKA SATINATO	25	56	25	56					
	PCS/Box	10	10	8	8	6	6	8	8

CARATTERISTICHE TECNICHE - TECHNICAL SPECIFICATIONS
 Alluminio EN AW6060 con finitura anodizzata.
 Aluminium EN AW6060 with anodized finish.

  USO: rivestimento e pavimento da interno.
 USE: wall and floor.

TAVELLA 6x60 cm / 2,4"x24" - Sp. 3mm

PCS/Box 8

 MBT60G.01 BRUSH	19	 MBT60L.01 SANDED	19
 MBT60G.02 SILVER BRUSH	29	 MBT60L.02 SILVER SANDED	29
 MBT60G.07 TITANIUM BRUSH	51	 MBT60L.07 TITANIUM SANDED	51
 MBT60G.03 BRONZE BRUSH	37	 MBT60L.03 BRONZE SANDED	37
 MBT60G.09 COPPER BRUSH	57	 MBT60L.09 COPPER SANDED	57



CARATTERISTICHE TECNICHE - TECHNICAL SPECIFICATIONS
 Alluminio EN AW6060 con finitura brushed manuale e anodizzato. Finitura B.01 protetta con trasparente.
 Aluminium EN AW6060 - brushed finish handmade and anodized. Finish B.01 protected with transparent.

  USO: rivestimento e pavimento da interno.
 USE: wall and floor.

QUARTER ROUND



DIMENSIONI/DIMENSION	S.02 ARGENTO SATINATO			S.03 BRONZO SATINATO			L.02 ARGENTO LUCIDO			L.03 BRONZO LUCIDO		
	60 cm 24"	100 cm 40"	200 cm 80"	60 cm 24"	100 cm 40"	200 cm 80"	60 cm 24"	100 cm 40"	200 cm 80"	60 cm 24"	100 cm 40"	200 cm 80"
	10	14	34	12	19	44	14	18	42	14	20	46
PCS/Box	6	6	6	6	6	6	6	6	6	6	6	6

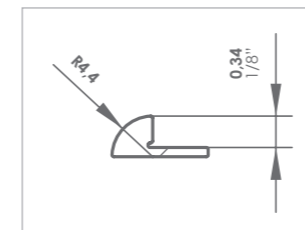
TAPPO DI CHIUSURA
CLOSURE CAP 14 PCS/Box 2

CARATTERISTICHE TECNICHE - TECHNICAL SPECIFICATIONS
Alluminio EN AW6060 con finitura anodizzata.
Aluminium EN AW6060 with anodized finish.

USO: rivestimento e pavimento da interno.
USE: wall and floor.

QUARTER ROUND SLIM 3 mm

	100 cm 60"	200 cm 80"
S.02 ARGENTO SATINATO	14	30
L.02 ARGENTO LUCIDO	23	50
L.03 BRONZO LUCIDO	26	58
L.07 TITANIO LUCIDO	26	58
L.09 COPPER LUCIDO	31	66
L.08 MOKA LUCIDO	26	58
L.06 FUMÈ LUCIDO	26	58
PCS/Box	12	12



PROFILI PER ANGOLI SLIM 5 mm



DIMENSIONI/DIMENSION	S.02 - ARGENTO SATINATO		S.03 - BRONZO SATINATO		L.02 - ARGENTO LUCIDO	
	100 cm / 40"	200 cm / 80"	100 cm / 40"	200 cm / 80"	100 cm / 40"	200 cm / 80"
	14	30	21	44	24	49
PCS/Box	8	8	8	8	8	8

CARATTERISTICHE TECNICHE - TECHNICAL SPECIFICATIONS
Alluminio EN AW6060 con finitura anodizzata.
Aluminium EN AW6060 with anodized finish.

USO: rivestimento e pavimento da interno.
USE: wall and floor.

FORMATI . SIZES

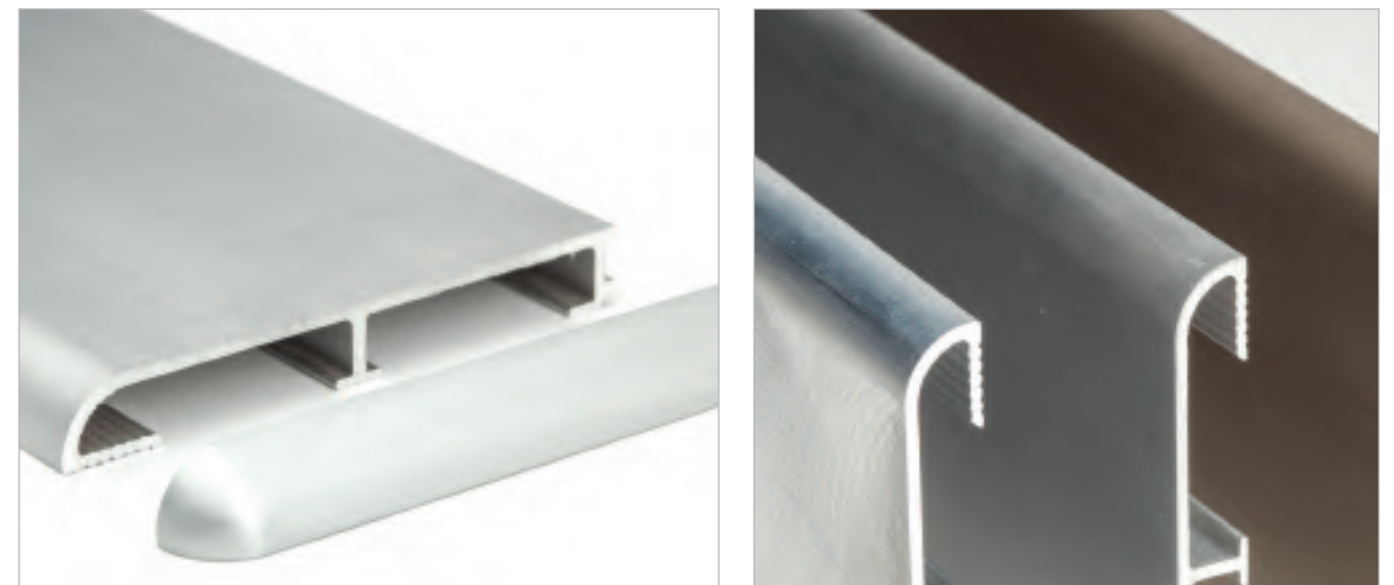
	MBL3341 FASCIA MINI STICK GLITTER 1,2x30 cm - 1/2"x12"	PCS/BOX 12	20
	MBL3342 FASCIA GLITTER 2,2x30 cm - 1"x12"	PCS/BOX 12	20
	MBL3323 FASCIA GLITTER 2,8x30 cm - 1,1"x12"	PCS/BOX 6	22
	MBL3325 FASCIA GLITTER 3,2x30 cm - 1,25"x12"	PCS/BOX 6	24
	MBL3343 FASCIA SCACCHIERA GLITTER 3x30 cm - 1,2"x12"	PCS/BOX 6	22
	MBL307 FASCIA FIORE GLITTER 3x30 cm - 1,2"x12"	PCS/BOX 6	29

COLORI DISPONIBILI . AVAILABLE COLORS

01 SILVER		22 BRONCE+ PAILETTES	
10 SAND CHIARO		08 AZZURRO	
04 RAME		19 NAVY BLUE+ PAILETTES	
07 RED		26 BURNISHED	
03 VIOLA		23 COAL	
28 SEAGREEN		24 BLACK+ PAILETTES	
21 BRONZO		15 HOLOGRAPHIC	

CARATTERISTICHE TECNICHE - TECHNICAL SPECIFICATIONS
Alluminio EN AW6060 protetto con resina decorata applicata a mano.
Aluminium EN AW6060 protected with decorated resin applied by hand.

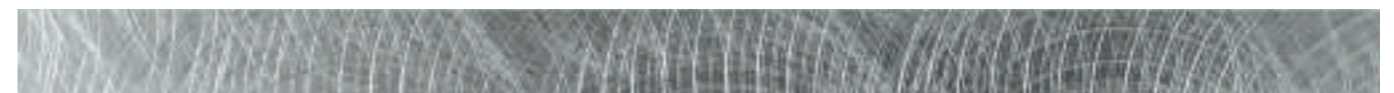
USO: rivestimento da interno.
USE: wall.



S.02 ARGENTO SATINATO



S.03 BRONZO SATINATO



B.01 BRUSH NEUTRO

DIMENSIONI/DIMENSION	S.02 - ARGENTO SATINATO			S.03 - BRONZO SATINATO			B.01 - BRUSH NEUTRO		
	60 cm 24"	100 cm 40"	200 cm 80"	60 cm 24"	100 cm 40"	200 cm 80"	60 cm 24"	100 cm 40"	200 cm 80"
	22	32	70	24	38	80	20	32	68
PCS/Box	6	6	6	6	6	6	6	6	6

TERMINALE ANGOLO 90° **14** pcs / box 2

CARATTERISTICHE TECNICHE - TECHNICAL SPECIFICATIONS
Alluminio EN AW6060 con finitura anodizzata. Finitura B.01 graffiatura manuale e protetto con trasparente.
Aluminium EN AW6060 with anodized finish. Finish B.01 with brushed finish handmade and protected with transparent.

USO: rivestimento e pavimento da interno.
USE: wall and floor.

CARATTERISTICHE TECNICHE

L'alluminio è un metallo tenero, leggero ma resistente, con un aspetto grigio argento; il processo di anodizzazione delle leghe ne previene la corrosione all'esposizione degli agenti atmosferici. L'alluminio pesa circa un terzo dell'acciaio o del rame; è malleabile, duttile e può essere lavorato facilmente; ha una eccellente resistenza alla corrosione e durata. Inoltre non è magnetico, non fa scintille, ed è il secondo metallo per malleabilità e sesto per duttilità.

Le Leghe di Alluminio da noi utilizzate:

5XXX Leghe Al-Mg

6XXX Leghe Al-Mg-Si

Leghe della serie 5000 nome commerciale Peraluman usata per la produzione delle piastre quadrate dei nostri pavimenti in alluminio nei vari formati, nelle finiture graffiata e levigata. Il principale elemento di lega è il Magnesio, che conferisce doti particolari di resistenza alla corrosione, oltre a buona resistenza a caldo ed ottime doti di duttilità e lavorabilità. In genere non richiede trattamento termico di invecchiamento e presenta buona saldabilità per fusione. Leghe della Serie 6000 nome commerciale Anticordal usata per la produzione dei mosaici, delle barre e dei listelli nelle finiture satinata, levigata, graffiata. I principali elementi della lega sono Silicio e Magnesio, presentano buona lavorabilità e saldabilità e sono idonee alla realizzazione di applicazioni architettoniche per interni. La resistenza alla corrosione è altrettanto variabile da lega a lega. Per le leghe della serie 5000 e 6000, che nella denominazione commerciale italiana vanno sotto il nome di PERALUMAN ed ANTICORDAL questa caratteristica è classificata ai massimi livelli. Il nostro obiettivo è quello di rendere l'alluminio materia per applicazioni architettoniche ad uso interno; i molteplici utilizzi sia dei nostri mosaici che delle nostre finiture costituiscono un elemento decorativo elegante ed attuale verso le esigenze del mercato.

CONDIZIONI GENERALI DI FORNITURA

I prezzi (cod.prezzi) si intendono al netto di iva e franco fabbrica (nostra sede).

Il listino ha validità fino al 31.12.2021. Se si dovesse modificare il listino prima della scadenza naturale verrà fatto con un preavviso di almeno 30 giorni.

I prezzi indicati si intendono sempre per scatole intere. Eventuali costi di trasporto verranno addebitati al costo. Il materiale viaggia a rischio e pericolo del committente.

I prodotti devono essere controllati prima della posa ed eventuali difetti di forma e/o qualità devono essere segnalati entro 8 giorni dal ricevimento della merce ed in ogni caso prima della posa. Non si accettano contestazioni a materiale posato.

Per qualsiasi controversia e/o contestazione sarà competente il foro di Modena.

TECHNICAL SPECIFICATIONS

ALUMINIUM is a lightweight but resistant metal, with a gray / silverish look. The anodizing process of the alloys prevents corrosion when exposed to atmospheric agents. Aluminum weighs roughly a third of steel or copper, is malleable and therefore easy to work. It has an excellent resistance against corrosion and a long life span. It doesn't magnetize, doesn't spark and is the second metal as to malleability and sixth for ductility.

The aluminium alloys used are:

5XXX Al-Mg alloy

6XXX Al-Mg-Si alloy

The 5000 Series alloys, trade brand "Peraluman" is employed for the fabrication of our square format aluminum tile production in the various sizes, with brushed and smooth finish.

The principal element of the alloy is Magnesium bestowing a particular resistance against corrosion along with a good heat resistance and excellent working ductility. Generally speaking it doesn't require thermal aging treatment and has a good welding fusion.

The 6000 Series alloys, trade brand "Anticordal" is employed for the production of mosaics, bars and the listellos for the satin, smooth and brushed finishes. The principal elements of the alloys are Silicon and Magnesium bestowing easy workmanship and welding properties and are suitable for internal architectural applications.

The corrosion resistance is variable from alloy to alloy. The Italian classification of the above two trade brands is of the maximum level.

Our aim is to permit the use of aluminum for non conventional internal architectural applications. The manifold uses of our mosaics, in their various finishes, offer an elegant, decorative and trendy element for today's market requests.

GENERAL SUPPLY CONDITIONS

The prices (price code) are VAT excluded and ex-works (our headquarters).

The price list shall be considered valid up to 31.12.2019. For any modification of the price list before that date the company provides at least a 30-day notice.

The prices are always intended for full boxes. Any transportation cost will be added to the product price. **The Customer is responsible for the material transportation.**

All products shall be checked before their installation and any shape and/or quality fault must be communicated within 8 days from the good reception and anyway before their installation. **No claims will be accepted after the products have been installed.**

Any dispute and/or claim will be submitted to the Court of Modena.

RICICLO

L'alluminio e l'ottone sono materiali riciclabili al 100%.

POSA

Le colle indicate sono quelle poliuretaniche o epossidiche. In caso di utilizzo di colle cementizie che tendono a creare un "ambiente basico" è NECESSARIO limitare il più possibile il contatto con la parte che rimarrà in vista e durante la posa pulire PRONTAMENTE con acqua e spugna morbida l'eccesso di colla che va sulla parte in vista. Anche durante la stuccatura PRESTARE ATTENZIONE agli eccessi di fugante. È fondamentale che la pulizia dei residui di stuccatura venga eliminata IMMEDIATAMENTE, prima che i prodotti usati inizino a far presa. Questo per evitare che la rimozione di eventuali residui non creino un danno estetico al materiale. Non utilizzare prodotti abrasivi, acidi e/o basici, ma solo panni e spugne morbide e pulite da eventuali residui cementizi. Non attendere che il fugante si indurisca, pulire sempre immediatamente. Per quanto riguarda la posa a pavimento, raccomandiamo l'utilizzo di un collante a conducibilità che permetta la conduzione elettrostatica e l'isolamento del pavimento. In caso di riscaldamento a pavimento e/o irraggiamento diretto del sole, consigliamo di lasciare per la dilatazione una "fuga" sul perimetro dell'ambiente di 5 - 10 mm a seconda dell'estensione della superficie.

PULIZIA

Si consiglia di usare un panno morbido inumidito con acqua e sapone, alcool o detergenti neutri per la casa (non acidi o basici). Non utilizzare in nessun caso prodotti abrasivi acidi o basici.

NOTA

Non utilizzare in nessun caso (posa, stuccatura, pulizia), prodotti abrasivi, acidi o basici, solventi e diluenti. Non applicare sulla parte decorata scotch, nastri adesivi o simili.

Differenze rispetto al campione in visione sono da considerarsi non come un difetto, ma come una caratteristica della lavorazione manuale che può essere suscettibile di variazioni di tonalità ed omogeneità.

I colori e le caratteristiche estetiche dei materiali illustrati nel presente catalogo sono da ritenersi puramente indicativi.

Metalborder si riserva di apportare eventuali modifiche e/o eliminare senza preavviso i prodotti declinando ogni responsabilità per danni diretti o indiretti derivanti da eventuali modifiche.

RECYCLE

Aluminium and brass are 100% recyclable material.

INSTALLATION

The indicated glues are polyurethane or epoxy glues. When using cement glues that tend to create a "basic environment", it is NECESSARY to limit as much as possible the contact with the part that will remain uncovered during the installation. PROMPTLY clean the excessive glue on the uncovered part using water and a soft sponge. PAY ATTENTION to the excessive grout during the grouting operation. It is essential to IMMEDIATELY remove the grouting residues before the products start to set. This is to avoid a later removal that could damage the material aesthetics. Do not use abrasive, acid and/or basic products, but only clean and soft cloths and sponges with no cement residue. Do not wait for the grout to become hard/dry. For further technical information refer to the technical sheets provided by the manufacturers of adhesives and glues. We recommend using always high-quality products. As far as the floor installation is concerned, we recommend using a conductive adhesive that allows electrostatic induction and floor insulation. In case of floor heating and/or sun direct radiation, we recommend leaving a 5-10 mm "joint" on the room perimeter according to its dimensions.

CLEANING

We recommend using a soft cloth soaked in soapy water, alcohol or household neutral detergents (not acid or basic). Never use abrasive, acid and/or basic products.

NOTE

do not under any circumstances (installation, grouting or cleaning) use abrasive, acid or alkaline products, acetone or solvents. Do not apply adhesive tape or similar products to the decorated surface.

Differences in respect with the sample have to be considered not as a defect, but as a characteristic coming from the manual working process which can be susceptible of variations of color and tone. Colours and optical features of the materials illustrated in this catalogue are to be regarded as mere indications.

Metalborder can change the indicated products without notice declining any responsibility for direct or indirect damage that depend on these changes.



Via S.Vito, 503 | 41057 Spilamberto(MO) ITALY | tel. +39 059 573042
info@metalborder.com | www.metalborder.com